



# SMMT New Car Registrations

7 January 2009

Note to broadcasters: SMMT has its own ISDN studio

Press Release Number 4617

For Release

Immediate

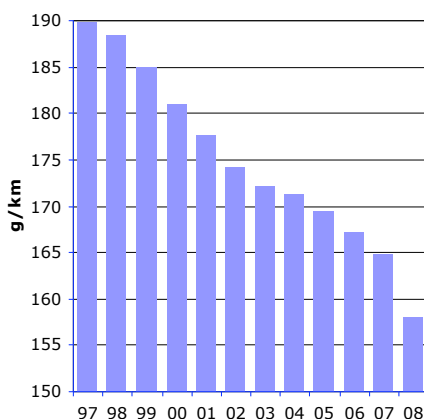
## December market falls, but not as far as expected

- New car registrations fell 21.2% in December to 108,691 units.
- Full year total is down 11.3% to 2,131,795 units from 2,404,007 in 2007.
- Diesel market share reached an all-time high of 43.6%.
- Average new car CO<sub>2</sub> fell by a record 4.2% to an average of 158.0 g/km in 2008, a total reduction of 16.8% since 1997.

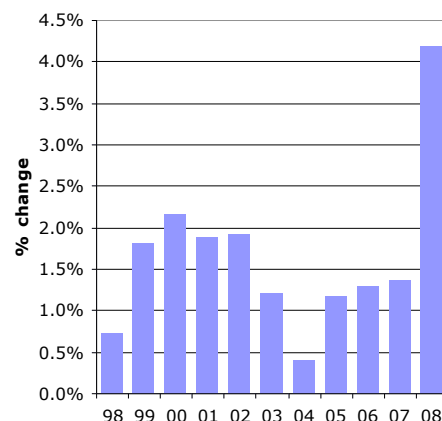
"The global economic downturn, precipitated by the crisis in the international banking and finance sector, created unprecedented challenges for the UK automotive industry in 2008," said SMMT chief executive, Paul Everitt. "The measures taken by government to support the banking sector and kick-start demand have been necessary, but are not yet sufficient to restore confidence. Further action to ease access to finance and credit across the economy is essential if long-term damage to valuable industrial capability is to be avoided.

"2009 will be another difficult year for the UK automotive industry with new vehicle registrations and production significantly reduced. The industry faces these challenges stronger and more resilient than in recent memory. The extraordinary circumstances we currently face mean that government support will be required to take advantage of global economic growth when it returns."

**Annual new car CO<sub>2</sub> emissions**



**Annual rate of improvement**



**Notes:**

At £ 0 bn, the automotive sector is Europe's largest investor in R&D, driving industry forward and helping deliver more sustainable motoring for the 21st century. Technological innovation has helped car and CV manufacturers slash CO<sub>2</sub> and air quality emissions from vehicles. New diesel cars for example emit 95% less soot from the tailpipe than those made 15 years ago and average new car CO<sub>2</sub> has been cut by 17% since 1997.

The energy needed to produce each vehicle is down 12%, water use is down 9% and waste to landfill is down 25%, compared to 2006 performance. CO<sub>2</sub> emissions per vehicle produced have fallen 14% in the last year and by 45% since 1999. Almost 10,000 tonnes of waste have been prevented from entering landfill sites. For more details, download SMMT's ninth annual Sustainability Report from the SMMT web site [www.smmt.co.uk/publications](http://www.smmt.co.uk/publications).

